



WINDSOR
WINDOWS & DOORS

PINNACLE SELECT PATIO DOORS

Luxury Aluminum Clad Doors





Table of Contents

Pinnacle Select Patio Doors – Reaching New Heights	3
Pinnacle Select Multi-slide Patio Doors	4-5
Pinnacle Select In-swing and Out-swing Patio Doors	6-7
Pinnacle Select Bi-fold Patio Doors	8-9
Options and Accessories	10-11

Pinnacle Select Patio Doors – Reaching new heights in style

The dream of building a home is realized through hard work.

For the homeowner and also for the designer, builder and all others involved. At Windsor Windows & Doors, we understand the design of a dream home reflects a unique lifestyle and aesthetic, not only in the interior space but also in the surrounding exterior landscape. Homes of stature and grace call for awe-inspiring views to match.

Introducing Pinnacle Select Patio Doors, an elite line of grand-scale patio door styles perfect for today's majestic architectural homes. Pinnacle Select Patio Doors are constructed from enhanced components for unsurpassed performance. Available in in-swing, out-swing, multi-slide and bi-folding styles, these doors are specifically designed for complementary interior and exterior space.

Pinnacle Select Patio Doors include two construction options:

- Thermally broken, heavy-duty all aluminum exterior and interior
- Thermally broken, heavy-duty aluminum exterior and wood interior; choose from beautiful Pine or Douglas Fir wood

With countless hardware options, expert craftsmanship and high-performance technology, these large-panel doors provide expansive full-glass views to the surrounding outdoor beauty in any season.





Multi-slide 1-1/8" standard sill



Multi-slide 2-1/2" recessed sill with drainage



Multi-slide 2-1/2" recessed sill no drainage

Pinnacle Select Multi-slide

For inspiring views from floor to ceiling / treetop to ground level, Windsor's Select line of Multi-slide Patio Doors offers unique architectural appeal, blending the splendor of the outdoors with any interior space – living room, dining room, kitchen, bedroom – the design possibilities are limitless.



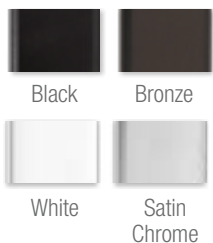
Multi-slide Alum Ext. Alum Int. Panel



Multi-slide Alum Ext. Wood Int. Panel

Stacking and pocket configurations

- Choice of thermally broken, heavy-duty all aluminum exterior and interior, or thermally broken, heavy-duty aluminum exterior and wood interior
- Stacking multi-slide system aligns all panels with the stationary panel when in the fully open position; all panels are visible
- Pocket multi-slide system incorporates a pocket into the wall cavity to conceal all panels when they are in the fully open position
- Door jamb widths vary depending on the number of panels in the multi-point door system and the handing
- Up to five panels in any one direction, and 10 panels for a bi-parting multi-slide door
- 2-3/8" thick panel construction
- Narrow 3-3/16" wide panels to reveal more glass for beautiful views
- Standard panel heights: 8-0, 9-0, 10-0, 11-0 and 12-0
- Standard panel widths: 3-0, 4-0, 5-0 and 6-0
- Maximum panel sizes: 5-0 x 12-0 and 6-0 x 10-0
- Standard 1-1/8" surface mount sill with 2-1/2" recessed sill with or without drainage
- Two-point locking gear with two-way adjustable keeper
- End adjust Delrin® rollers
- Flush mount handle available in black, bronze, white and satin chrome
- Lead panel on pocket doors comes with a finger pull



Flush mount handle available in black, bronze, white and satin chrome





Pinnacle Select

In-swing and Out-swing

Today's homes come to life when the patio serves as a warm, open extension of the living space. Windsor's elite line of Select Swinging Patio Doors adds a true architectural statement sure to welcome – and impress – family and friends. Choose from in-swing or out-swing models; either is perfect for expanding the living space for entertaining or simply to enjoy the beauty of the outdoors.



In-swing/Out-swing
Alum Ext. Alum Int. Panel



In-swing/Out-swing
Alum Ext. Wood Int. Panel



In-swing 1-1/4" standard sill



Out-swing 1-1/4" standard sill



ADA sill

Configurations to fit any design & lifestyle

- Choice of thermally broken, heavy-duty all aluminum exterior and interior, or thermally broken, heavy-duty aluminum exterior and wood interior
- Single-panel and two-panel options available
- 2-3/8" thick panel construction
- Narrow 3-3/16" wide panels reveal more glass for beautiful views
- Standard panel heights: 8-0, 9-0, 10-0, 11-0 and 12-0
- Standard panel widths: 2-6, 2-8, 3-0, 3-6
- Maximum panel size: 3-6 x 12-0
- Frame widths up to 3-6 x 12-0 single-panel door and 7-0 x 12-0 two-panel door
- Standard 1-1/4" surface mount and ADA sill options
- Three-point multi-point locking system on 8-0 through 10-0 tall doors; four-point multi-point locking system on doors over 10-0
- Three handle styles: Aria, Acacia and Summit in black, bronze, white and satin chrome
- Hinges available in bronze and satin chrome



Black

Bronze

White

Satin
Chrome



Aria
Handle



Acacia
Handle



Summit
Handle





Pinnacle Select Bi-fold

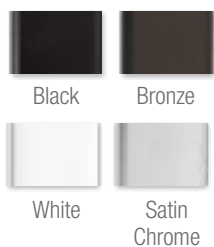
Combining beautiful style and effortless function, Windsor's line of Select Bi-fold Patio Doors is another option to connect the home's interior space to outdoor patio living. These bi-fold doors fold like an accordion to create wide-open entryways. The hinge system provides stability and smooth operation while the multi-point locking system provides uncompromised security.



Bi-fold Alum Ext. Alum Int. Panel



Bi-fold Alum Ext. Wood Int. Panel



Wood Interior Bi-fold
Twin Bolt Handle
(Black or Bronze)



Aluminum Interior Bi-fold
Twin Bolt Handle
(Black or Bronze)

Distinctive options for unique lifestyles

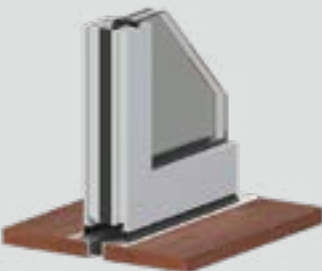
- Choice of thermally broken, heavy-duty all aluminum exterior and interior, or thermally broken, heavy-duty aluminum exterior and wood interior
- 2-5/8" thick panel construction on wood interior doors 2-3/8" thick panel construction on aluminum interior doors
- Narrow 2-1/16" wide panels to reveal more glass for beautiful views
- Multiple handing options for maximum 8 panels and 21 ft frame width; bi-parting can be 8L-8R with a maximum frame width of 42 ft
- Standard panel heights 8-0, 9-0, 10-0, 11-0 and 12-0
- Standard panel widths 2-6, 3-0, 3-6
- Maximum panel size 3-6 x 12-0
- Standard 2-3/16" surface mount, 3/4" recessed without drainage and 1-1/2" recessed with drainage sill options
- Three-point multi-point locking system on 8-0 through 10-0 tall doors; four-point multi-point locking system on doors over 10-0
- Handle activated concealed twin bolt system
- Bi-fold hardware finishes
 - *All aluminum door:*
 - Hinges, D-handle, twin bolt handle, top roller assembly and bottom hinge guide will match the color of the door
 - *Aluminum door with wood interior:*
 - Hinges: Interior hinges available in bronze or black; exterior hinges will match exterior door color
 - Interior D-handle: Available in bronze or black
 - Interior twin bolt handle: Available in bronze or black
 - Top roller assembly: Interior available in bronze or black; exterior top roller assembly will match exterior door color
 - Bottom hinge guide: Interior available in bronze or black; exterior will match exterior door color
- Three handle styles available in black, bronze, white and satin chrome



Bi-fold 2-3/16" STD surface track sill



Bi-fold 1-1/2" recessed sill with drainage



Bi-fold 3/4" recessed sill no drainage



Options and Accessories

Windsor does more than just create durable, high-performance windows and doors. We pay attention to every detail. Our hardware, finishes, cladding colors, glass options and trim options complete the perfect window and door package. Plus, Windsor's in-house powder coat paint application can help you make a statement. Choose from over 40 shades in our standard and feature color palettes, or make it truly unique with custom color matching.

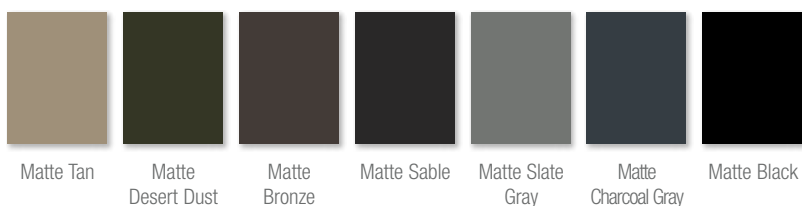
STANDARD CLAD COLORS



FEATURE CLAD COLORS Custom color matching is also available.



MATTE CLAD COLORS Available in the 2604 finish only.¹



¹2604 finish backed by a 20-year* warranty; 2605 finish backed by a 30-year* warranty; applications within one mile of the coast carry a 10-year warranty. For specific warranty details, please refer to the complete warranty document posted on our website, www.windsorwindows.com.

NOTE: Printing limitations prevent exact color/finish representation. See your Windsor distributor for actual samples.

¹2604 finish backed by a 20-year* warranty; 2605 finish backed by a 30-year* warranty; applications within one mile of the coast carry a 10-year warranty. For specific warranty details, please refer to the complete warranty document posted on our website, www.windsorwindows.com.

INTERIOR WOOD SPECIES AND FINISHES



Clear Select Pine



Douglas Fir

GLASS



LoE 366 (Standard)



Dual Low-E



LoE 270

Make every project a success.

Windsor Windows & Doors has distinct product lines for every application. New construction. Room additions. Window replacement. Windsor has the solutions to help meet any home building or home improvement need. Discover all of the products we have to offer.





CONNECT WITH US



900 South 19th Street, West Des Moines, IA 50265 • 515.223.6660 • 800.218.6186
 2210 Stafford Street Extension, Monroe, NC 28110 • 704.283.7459 • 800.205.5665

www.windsorwindows.com

A WOODGRAIN COMPANY

© 2020 Woodgrain Millwork Inc. Woodgrain Millwork, Windsor, the Windsor Lion logo, Next Dimension and Legend are registered trademarks of Woodgrain Millwork Inc. Windsor Windows & Doors, Pinnacle, Revive and Redstone are trademarks of Woodgrain Millwork Inc.



Windsor Windows & Doors is an ENERGY STAR® partner and an NFRC, USGBC and WDMA member. Windsor products are certified and labeled according to the guidelines established by the National Fenestration Rating Council (NFRC).