

INSTALLATION NOTES:

1. ONE (1) INSTALLATION ANCHOR IS REQUIRED AT EACH ANCHOR LOCATION SHOWN.
2. THE NUMBER OF INSTALLATION ANCHORS DEPICTED IS THE MINIMUM NUMBER OF ANCHORS TO BE USED FOR PRODUCT INSTALLATION OF THE MAXIMUM SIZE LISTED.
3. INSTALL INDIVIDUAL INSTALLATION ANCHORS WITHIN A TOLERANCE OF ±1/2 INCH BASED ON QUANTITIES IN DP CHARTS NOT TO EXCEED THE DEPICTED LOCATION & SPACING IN THE ANCHOR LAYOUT DETAILS (I.E., WITHOUT CONSIDERATION OF TOLERANCES). TOLERANCES ARE NOT CUMULATIVE FROM ONE INSTALLATION ANCHOR TO THE NEXT
4. SHIM AS REQUIRED AT EACH INSTALLATION ANCHOR WITH LOAD BEARING SHIM(S). MAXIMUM ALLOWABLE SHIM STACK TO BE 1/4 INCH. SHIM WHERE SPACE OF 1/16 INCH OR GREATER OCCURS. SHIM(S) SHALL BE CONSTRUCTED OF HIGH DENSITY PLASTIC OR BETTER.
5. THROUGH FRAME: FOR INSTALLATION INTO WOOD FRAMING USE #10 WOOD SCREWS OF SUFFICIENT LENGTH TO ACHIEVE 1 1/2" MINIMUM EMBEDMENT INTO WOOD SUBSTRATE.
6. THROUGH FRAME: FOR INSTALLATION THROUGH 1X BUCK TO CONCRETE/MASONRY, OR DIRECTLY INTO CONCRETE/MASONRY, USE 1/4" DIAMETER ITW TAPCONS, ELCO ULTRACONS, ELCO CRETE-FLEX OR HILTI KWIK-CON II OF SUFFICIENT LENGTH TO ACHIEVE 1 1/4" MINIMUM EMBEDMENT.
7. THROUGH FRAME: FOR INSTALLATION INTO METAL STUD OR APPROVED MULLION USE #10 GR. 5 SELF TAPPING SCREWS OF SUFFICIENT LENGTH TO ACHIEVE A MINIMUM OF 3 THREADS PENETRATION BEYOND METAL FRAME SUBSTRATE.
8. CLIPS SHALL BE FASTENED TO THE WINDOW FRAME WITH (2) #8 X 5/8" SCREWS. CLIPS ARE 20 GAUGE (0.063" THICKNESS) F'y=33 KSI MIN STEEL WITH OVERALL DIMENSIONS OF 1.5" WIDE, 7.813" ALONG THE LONG LEG, AND 1.942" ALONG THE SHORT LEG.
9. CLIP ANCHOR: FOR INSTALLATION INTO METAL STUD USE (2) #8 GR. 5 SELF-TAPPING SCREWS PER CLIP OF SUFFICIENT LENGTH TO ACHIEVE 3 THREADS MINIMUM PENETRATION BEYOND THE METAL STRUCTURE.
10. CLIP ANCHOR: FOR INSTALLATION INTO WOOD FRAMING USE (2) #8 WOOD SCREWS PER CLIP OF SUFFICIENT LENGTH TO ACHIEVE 1 1/2 INCH MINIMUM EMBEDMENT INTO WOOD SUBSTRATE.
11. NAIL FIN: FOR INSTALLATION INTO WOOD FRAMING USE #8 WOOD SCREWS OR USE 10D COMMON NAIL OR 11 GAUGE ROOFING NAIL PER LOCATION OF SUFFICIENT LENGTH TO ACHIEVE 1 1/2 INCH MINIMUM EMBEDMENT INTO WOOD SUBSTRATE.
12. NAIL FIN: FOR INSTALLATION INTO METAL STUD OR APPROVED MULLION USE #8 GR. 5 SELF TAPPING SCREWS OF SUFFICIENT LENGTH TO ACHIEVE A MINIMUM OF 3 THREADS PENETRATION BEYOND METAL FRAME SUBSTRATE.
13. MINIMUM EMBEDMENT AND EDGE DISTANCE EXCLUDE WALL FINISHES, INCLUDING BUT NOT LIMITED TO STUCCO, FOAM, BRICK VENEER, AND SIDING.
14. INSTALLATION ANCHORS AND ASSOCIATED HARDWARE MUST BE MADE OF CORROSION RESISTANT MATERIAL OR HAVE A CORROSION RESISTANT COATING.
15. FOR GROUT FILLED BLOCK, DO NOT INSTALL INSTALLATION ANCHORS INTO MORTAR JOINTS. EDGE DISTANCE IS MEASURED FROM FREE EDGE OF BLOCK OR EDGE OF MORTAR JOINT INTO FACE SHELL OF BLOCK.
16. INSTALLATION ANCHORS SHALL BE INSTALLED IN ACCORDANCE WITH ANCHOR MANUFACTURER'S INSTALLATION INSTRUCTIONS, AND ANCHORS SHALL NOT BE USED IN SUBSTRATES WITH STRENGTHS LESS THAN THE MINIMUM STRENGTH SPECIFIED BY THE ANCHOR MANUFACTURER.

WINDSOR WINDOWS & DOORS

PINNACLE CLAD DIRECT SET WINDOW

(NON-HVHZ)(NON-IMPACT)

INSTALLATION NOTES (CONTINUED):

17. INSTALLATION ANCHOR CAPACITIES FOR PRODUCTS HEREIN ARE BASED ON SUBSTRATE MATERIALS WITH THE FOLLOWING PROPERTIES:

A. WOOD - MINIMUM SPECIFIC GRAVITY OF 0.55.

B. CONCRETE -MINIMUM COMPRESSIVE STRENGTH OF 3000 PSI.

C. GROUT-FILLED CMU- UNIT STRENGTH CONFORMS TO ASTM C-90 WITH MINIMUM COMPRESSIVE STRENGTH OF 2000 PSI AND GROUT CONFORMS TO ASTM C 476, MINIMUM GROUT COMPRESSIVE STRENGTH OF 2000 PSI.

D. STEEL - MINIMUM YIELD STRENGTH OF 33 KSI. MINIMUM 18 GA. WALL THICKNESS.

E. ALUMINUM - MINIMUM ALLOY 6063-T5. MINIMUM WALL THICKNESS OF 1/8" (0.125").

GENERAL NOTES:

1. THE PRODUCT SHOWN HEREIN IS DESIGNED AND MANUFACTURED TO COMPLY WITH THE CURRENT FLORIDA BUILDING CODE (FBC), EXCLUDING HVHZ AND HAS BEEN EVALUATED ACCORDING TO THE FOLLOWING:

AAMA/WDMA/CSA 101/I.S.2/A440-11/17
2. ADEQUACY OF THE EXISTING STRUCTURAL CONCRETE/MASONRY AND 2X FRAMING AS A MAIN WIND FORCE RESISTING SYSTEM CAPABLE OF WITHSTANDING AND TRANSFERRING APPLIED PRODUCT LOADS TO THE FOUNDATION IS THE RESPONSIBILITY OF THE ENGINEER OR ARCHITECT OF RECORD FOR THE PROJECT OF INSTALLATION.
2. 1X AND 2X BUCKS (WHEN USED) SHALL BE DESIGNED AND ANCHORED TO PROPERLY TRANSFER ALL LOADS TO THE STRUCTURE. BUCK DESIGN AND INSTALLATION IS THE RESPONSIBILITY OF THE ENGINEER OR ARCHITECT OF RECORD FOR THE PROJECT OF INSTALLATION.
3. THE INSTALLATION DETAILS DESCRIBED HEREIN ARE GENERIC AND MAY NOT REFLECT ACTUAL CONDITIONS FOR A SPECIFIC SITE. IF SITE CONDITIONS CAUSE INSTALLATION TO DEVIATE FROM THE REQUIREMENTS DETAILED HEREIN, A LICENSED ENGINEER OR ARCHITECT SHALL PREPARE SITE SPECIFIC DOCUMENTS FOR USE WITH THIS DOCUMENT IN NON-HVHZ AREAS.
4. APPROVED IMPACT PROTECTIVE SYSTEM **IS REQUIRED** ON THIS PRODUCT.
5. WINDOW FRAME MATERIAL: WOOD
WINDOW CLADDING MATERIAL: ALUMINUM 6063-T5
6. GLASS SHALL MEET THE REQUIREMENTS OF ASTM E 1300 GLASS CHARTS. SEE SHEET 3 FOR GLAZING DETAILS.

TABLE OF CONTENTS	
SHEET	SHEET DESCRIPTION
1	INSTALLATION & GENERAL NOTES
2	ELEVATIONS
3	ANCHOR LAYOUTS & GLAZING DETAIL
4	LOW PROFILE INSTALLATION SECTIONS
5	STANDARD PROFILE INSTALLATION SECTIONS

DESIGN PRESSURE TABLE						
TYP. OVERALL SIZE		DESIGN PRESSURE	CONFIGURATION	PROFILE*	INSTALLATION METHOD	MISSILE IMPACT RATING
WIDTH	HEIGHT					
60"	120"	+65/-65 PSF	"O"	LP	THROUGH FRAME, NAIL FIN & CLIP	NON - IMPACT
122"	72"	+50/-50 PSF	"O"	LP		
96"	84"	+50/-50 PSF	"O"	LP		
102"	83"	+50/-50 PSF	"O"	STD		
102"	60"	+65/-65 PSF	"O"	STD		
48"	72"	+70/-70 PSF	"O"	STD		
120"	72"	+50/-50 PSF	"O"	STD		

*LP = Low Profile
STD = Standard Profile



WINDSOR WINDOWS & DOORS

900 S. 19TH STREET.
WEST DES MOINES, IA 50265
PH: (515)223-6660 FAX: (515)224-1938

TITLE: PINNACLE CLAD DIRECT SET WINDOW (NON-HVHZ)(NON-IMPACT)

INSTALLATION AND GENERAL NOTES

PREPARED BY:

BUILDING DROPS, INC.

398 E. DANIA BEACH BLVD., STE. 338

DANIA BEACH, FL 33004

PH: (954)399-8478

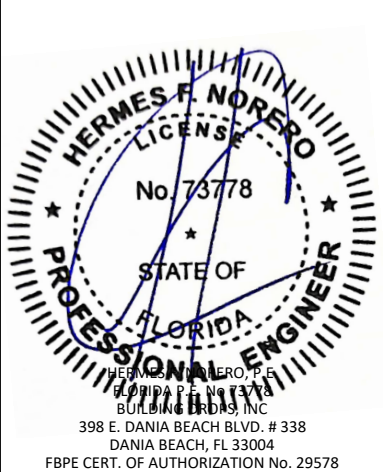
FAX: (954)744-4738

WEB: www.buildingdrops.com



REMARKS	BY	DATE
2020 CODE CHANGE	YC	06/20
2023 CODE CHANGE	MG	02/23

THE INSTALLATION DETAILS DESCRIBED HEREIN ARE GENERIC AND MAY NOT REFLECT ACTUAL CONDITIONS FOR A SPECIFIC SITE. IF SITE CONDITIONS CAUSE INSTALLATION TO DEVIATE FROM THE REQUIREMENTS DETAILED HEREIN, A LICENSED ENGINEER OR ARCHITECT SHALL PREPARE SITE SPECIFIC DOCUMENTS FOR USE WITH THIS DOCUMENT.



FL #:

FL11570

DATE: 06.09.2020

DWG. BY:
YC

CHK. BY:
HFN

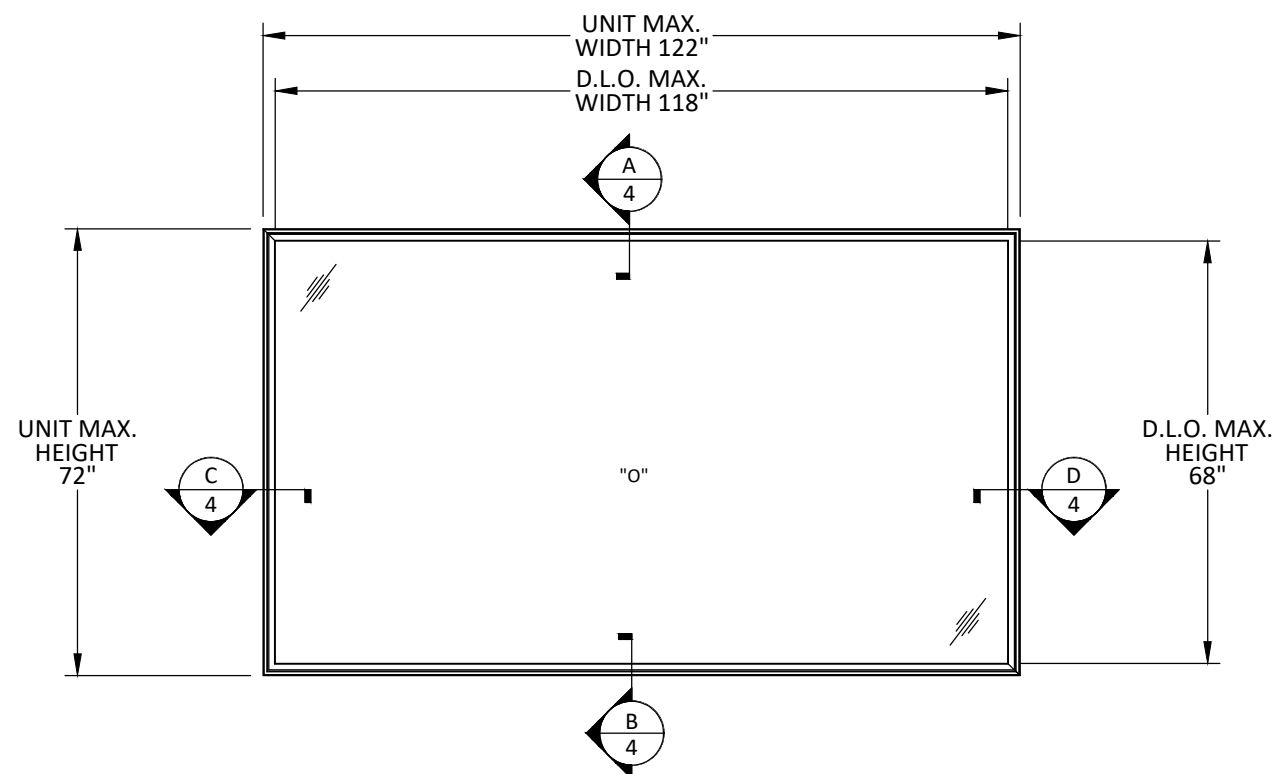
SCALE: NTS

DWG. #: WWD034

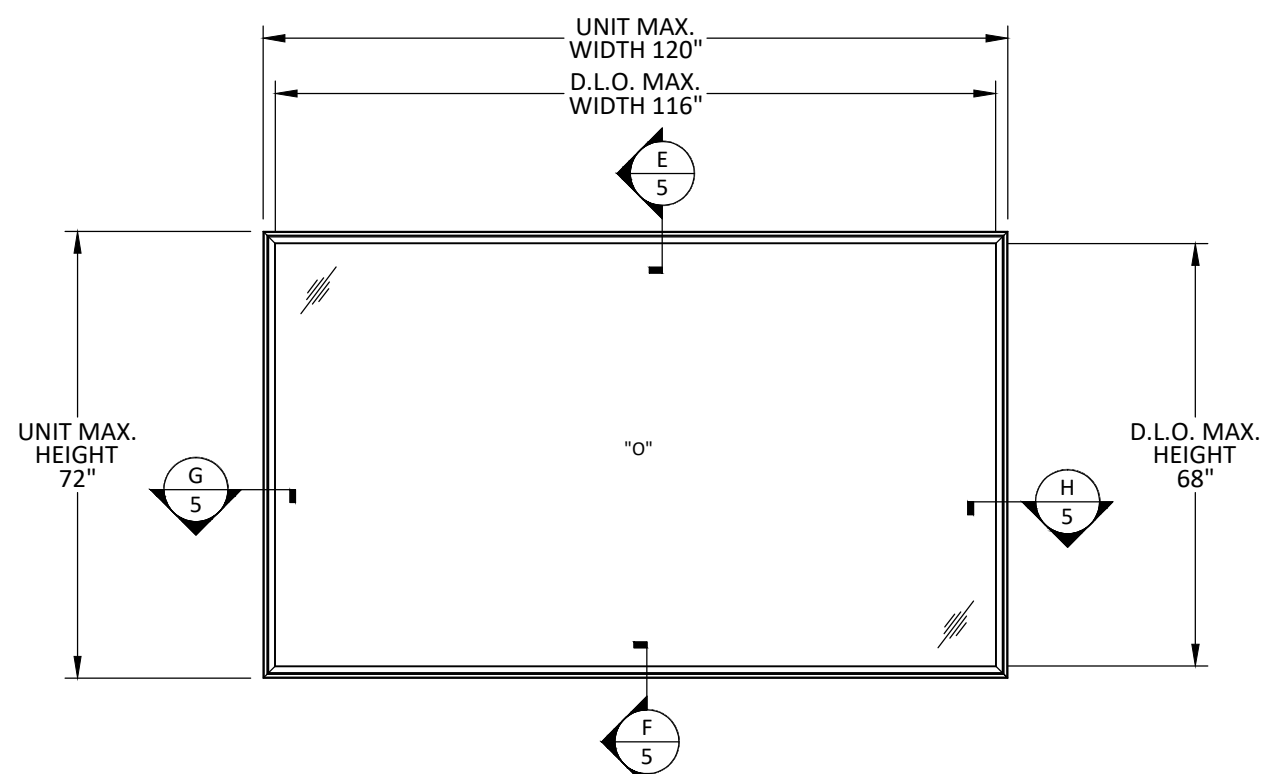
SHEET:

1

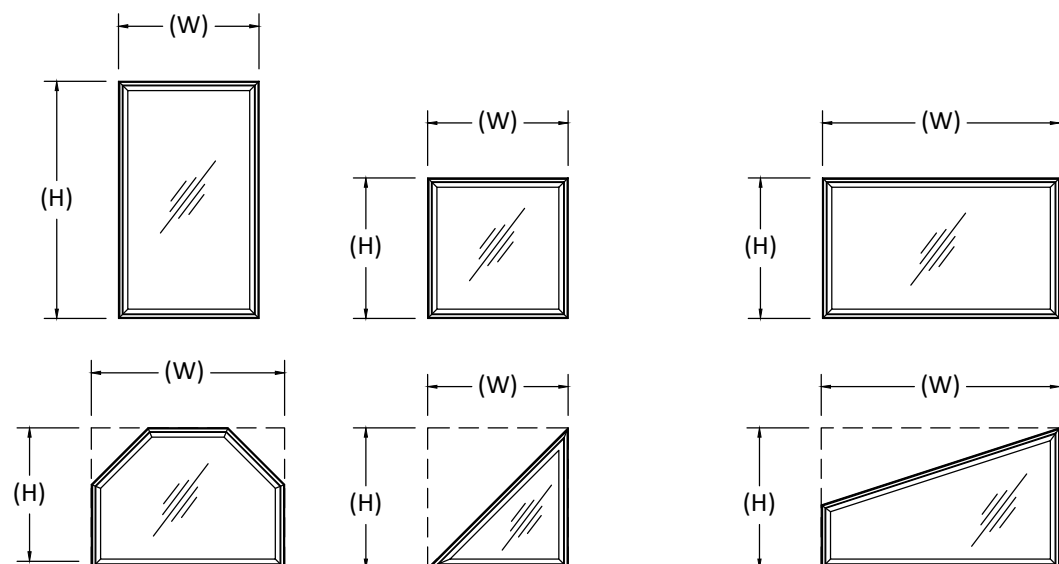
OF 5



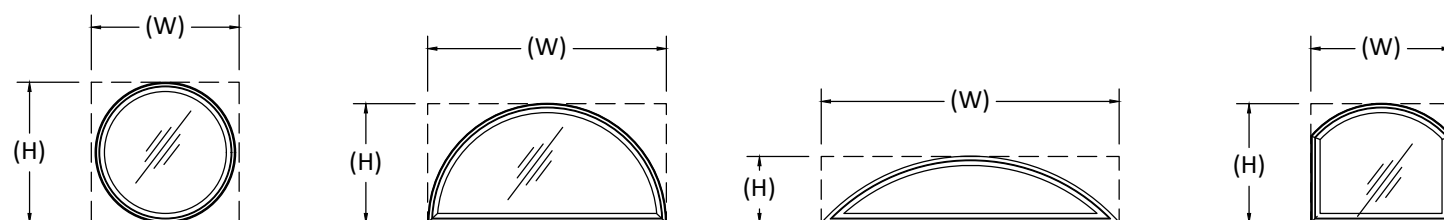
TYPICAL ELEVATION
LOW PROFILE



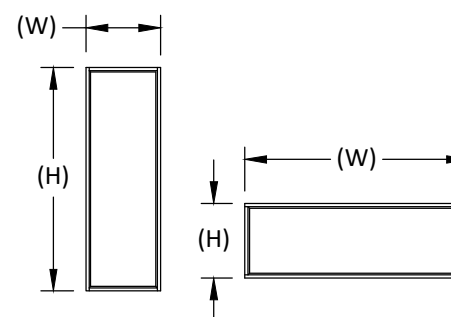
TYPICAL ELEVATION
STANDARD PROFILE



STANDARD & LOW PROFILE ALLOWABLE SHAPES



LOW PROFILE ALLOWABLE SHAPES



NOTE:
WINDOW WIDTH (W) AND HEIGHT (H) ARE INTERCHANGEABLE FOR ALL SIZES SHOWN HEREIN NOT TO EXCEED MAXIMUM TESTED SQUARE FOOT AREA. ANCHOR SPACING SHALL NOT EXCEED THOSE SHOWN FOR LONG OR SHORT LEG OF UNIT.



WINDSOR WINDOWS & DOORS
900 S. 19TH STREET.
WEST DES MOINES, IA 50265
PH: (515)223-6660 FAX: (515)224-1938

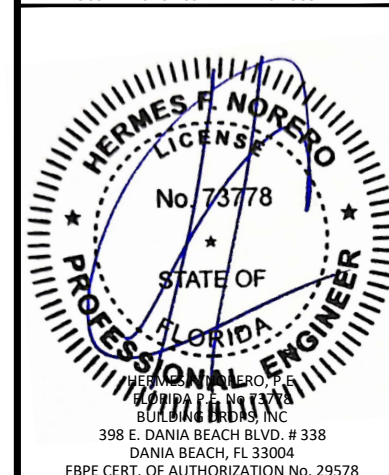
TITLE: PINNACLE CLAD DIRECT
SET WINDOW
(NON-HVHZ)(NON-IMPACT)
ELEVATIONS

PREPARED BY:
BUILDING DROPS, INC.
398 E. DANIA BEACH BLVD., STE. 338
DANIA BEACH, FL 33004
PH: (954)399-8478
FAX: (954)744-4738
WEB: www.buildingdrops.com



REMARKS	BY	DATE
2020 CODE CHANGE	YC	06/20
2023 CODE CHANGE	MG	02/23

THE INSTALLATION DETAILS DESCRIBED HEREIN ARE GENERIC AND MAY NOT REFLECT ACTUAL CONDITIONS FOR A SPECIFIC SITE. IF SITE CONDITIONS CAUSE INSTALLATION TO DEVIATE FROM THE REQUIREMENTS DETAILED HEREIN, A LICENSED ENGINEER OR ARCHITECT SHALL PREPARE SITE SPECIFIC DOCUMENTS FOR USE WITH THIS DOCUMENT.



FL #:	FL11570
DATE:	06.09.2020
DWG. BY:	YC
CHK. BY:	HFN
SCALE:	NTS
DWG. #:	WWD034
SHEET:	

**WINDSOR WINDOWS
& DOORS**

900 S. 19TH STREET.
WEST DES MOINES, IA 50265
PH: (515)223-6660 FAX: (515)224-1938

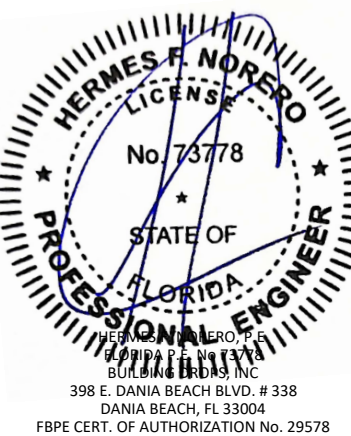
TITLE: PINNACLE CLAD DIRECT
SET WINDOW
(NON-HVHZ)(NON-IMPACT)
ANCHOR LAYOUTS & GLAZING DETAIL

PREPARED BY:
BUILDING DROPS, INC.
398 E. DANIA BEACH BLVD., STE. 338
DANIA BEACH, FL 33004
PH: (954)399-8478
FAX: (954)744-4738
WEB: www.buildingdrops.com

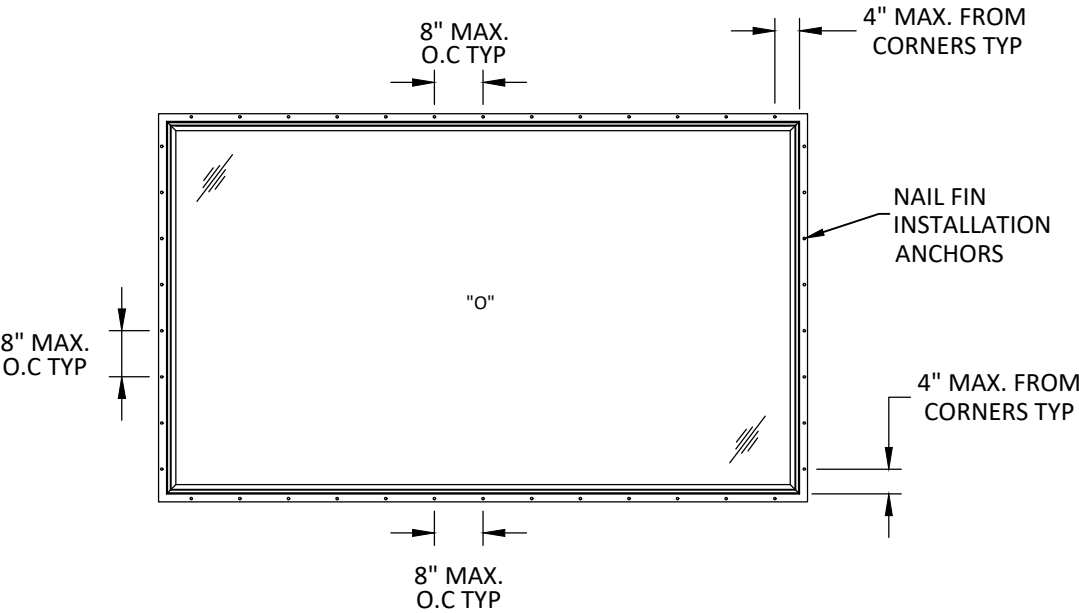


REMARKS	BY	DATE
2020 CODE CHANGE	YC	06/20
2023 CODE CHANGE	MG	02/23

THE INSTALLATION DETAILS DESCRIBED HEREIN ARE GENERIC
AND MAY NOT REFLECT ACTUAL CONDITIONS FOR A SPECIFIC
SITE. IF SITE CONDITIONS CAUSE INSTALLATION TO DEVIATE
FROM THE REQUIREMENTS DETAILED HEREIN, A LICENSED
ENGINEER OR ARCHITECT SHALL PREPARE SITE SPECIFIC
DOCUMENTS FOR USE WITH THIS DOCUMENT.

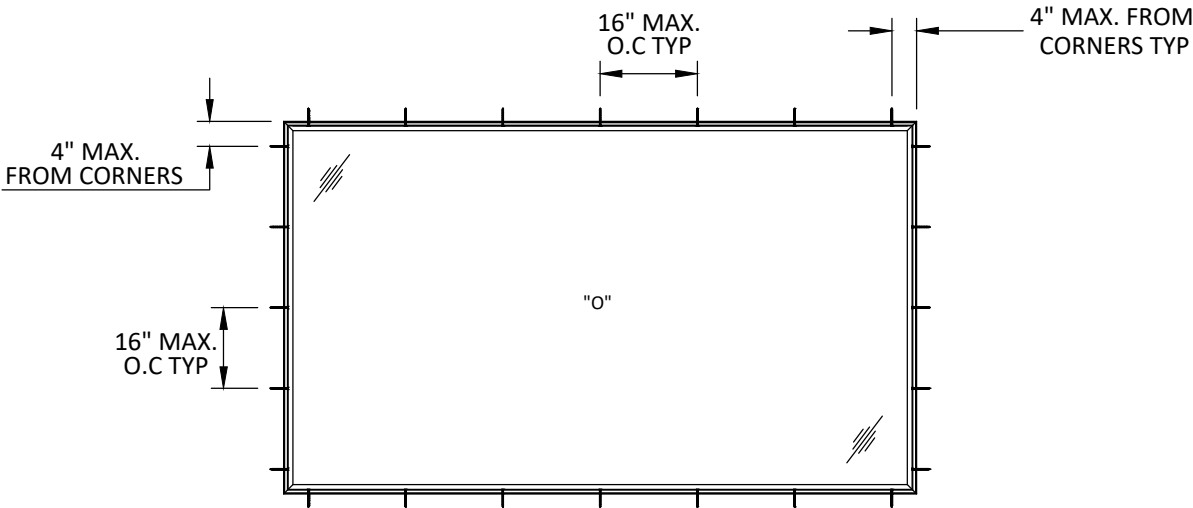


FL #:	FL11570
DATE:	06.09.2020
DWG. BY:	YC
CHK. BY:	HFN
SCALE:	NTS
DWG. #:	WWD034
SHEET:	3 OF 5



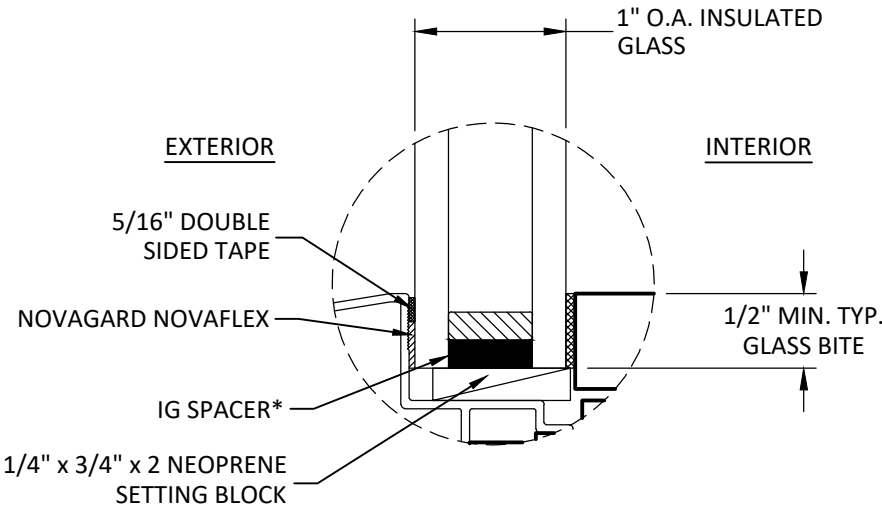
TYPICAL ANCHOR LAYOUT

NAIL FIN INSTALLATION



TYPICAL ANCHOR LAYOUT

CLIP OR THROUGH FRAME INSTALLATION

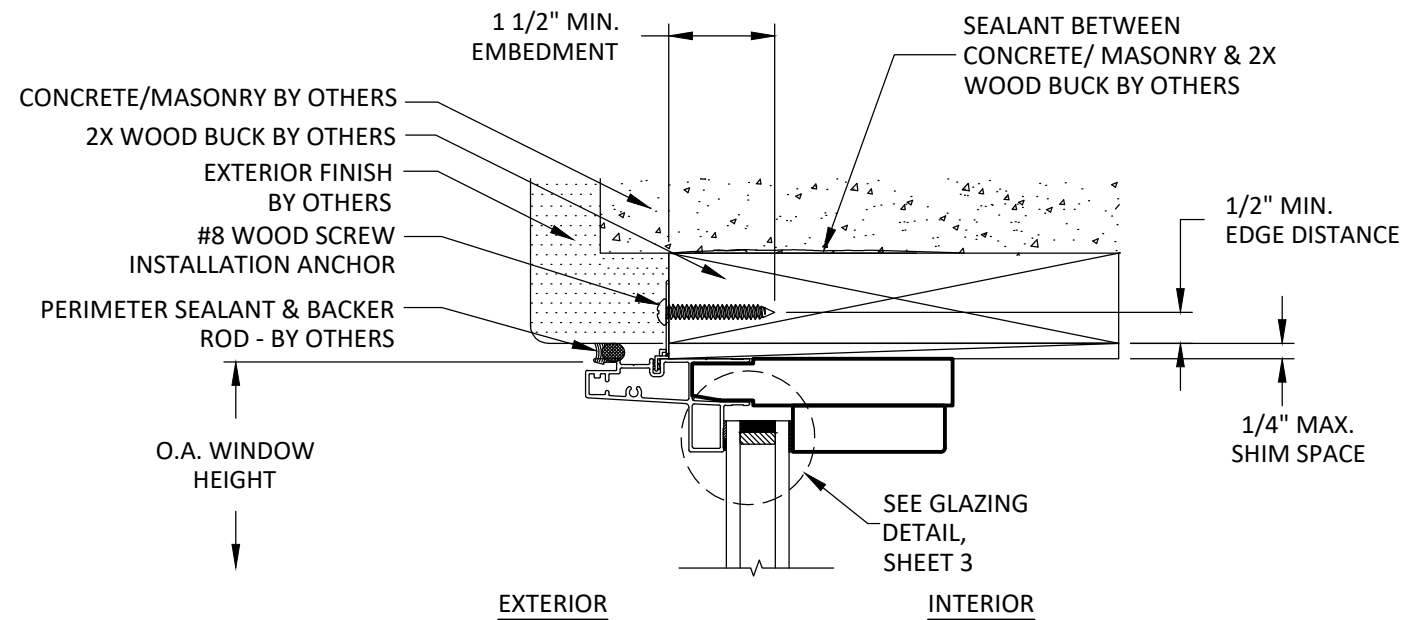


GLAZING DETAIL

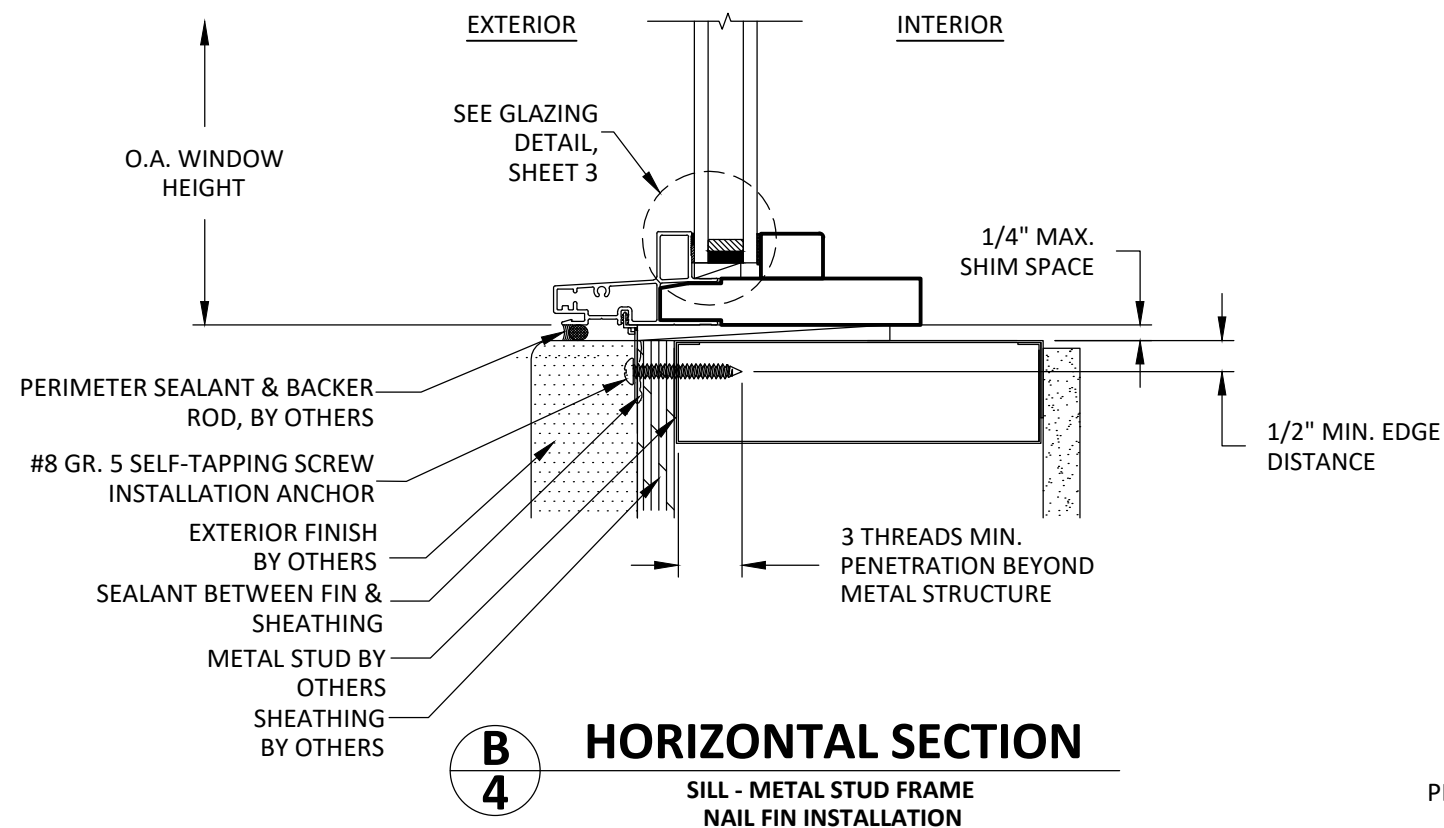
GLAZING NOTES

- 1) GLASS TYPE AND THICKNESS SHALL COMPLY WITH ASTM E1300 REQUIREMENTS AS WELL AS APPLICABLE SAFETY GLAZING REQUIREMENTS PER THE FBC. THICKNESS, TEMPER, AND SAFETY GLAZING REQUIREMENTS SHALL BE REVIEWED ON A SITE SPECIFIC BASIS.
- 2) SETTING BLOCK DUROMETER HARDNESS OF 70-90 (SHORE A) AS REFERENCED IN FBC CHAPTER 24.
- 3) SETTING BLOCKS TO BE LOCATED AT 1/4 SPAN LENGTH FOR GLASS WIDER THAN 36" AS PER FBC CHAPTER 24.
- 4) *FOR GLASS THICKNESS UP TO 3.9 mm, USE QUANEX FOAM SUPER SPACER IG SPACER, FOR GLASS THICKNESS OVER 3.9 mm USE CARDINAL ENDURE STAINLESS STEEL IG SPACER.

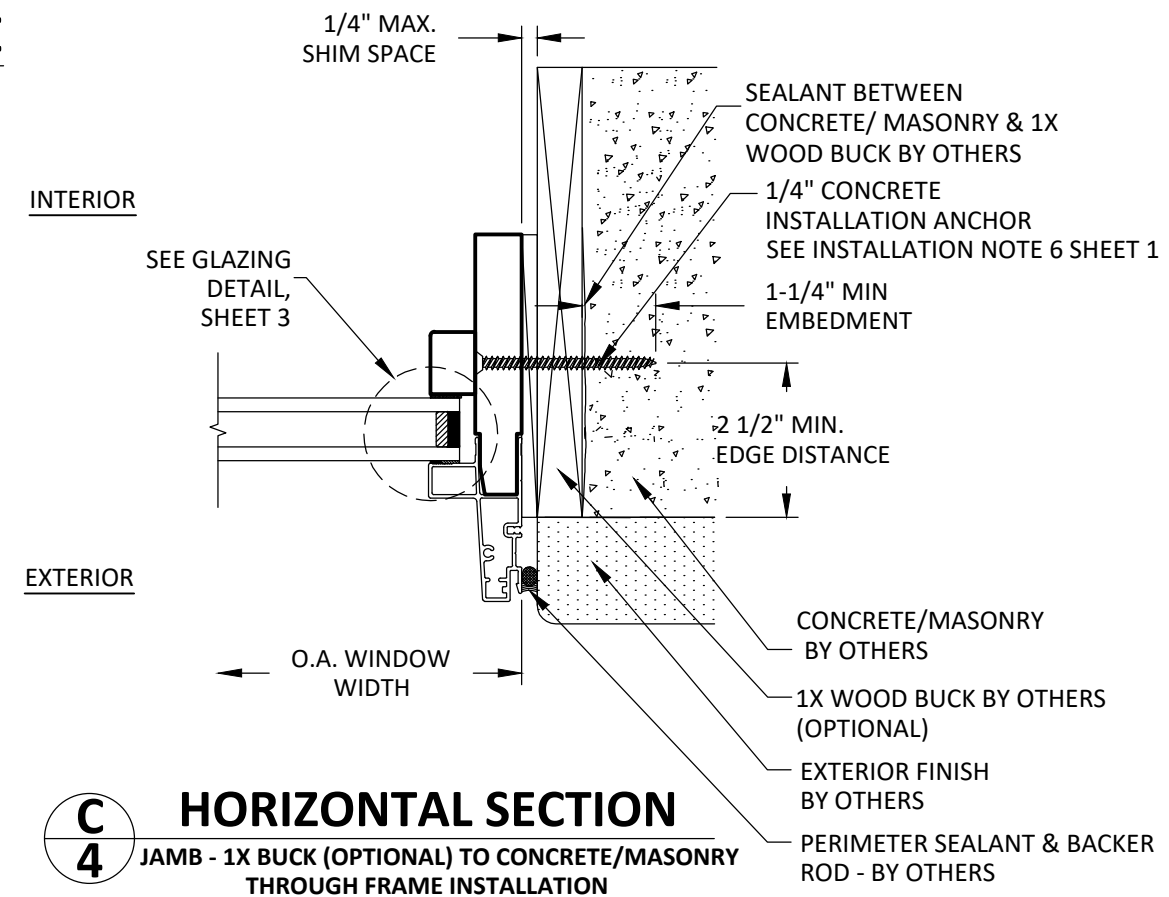
LOW PROFILE FRAME



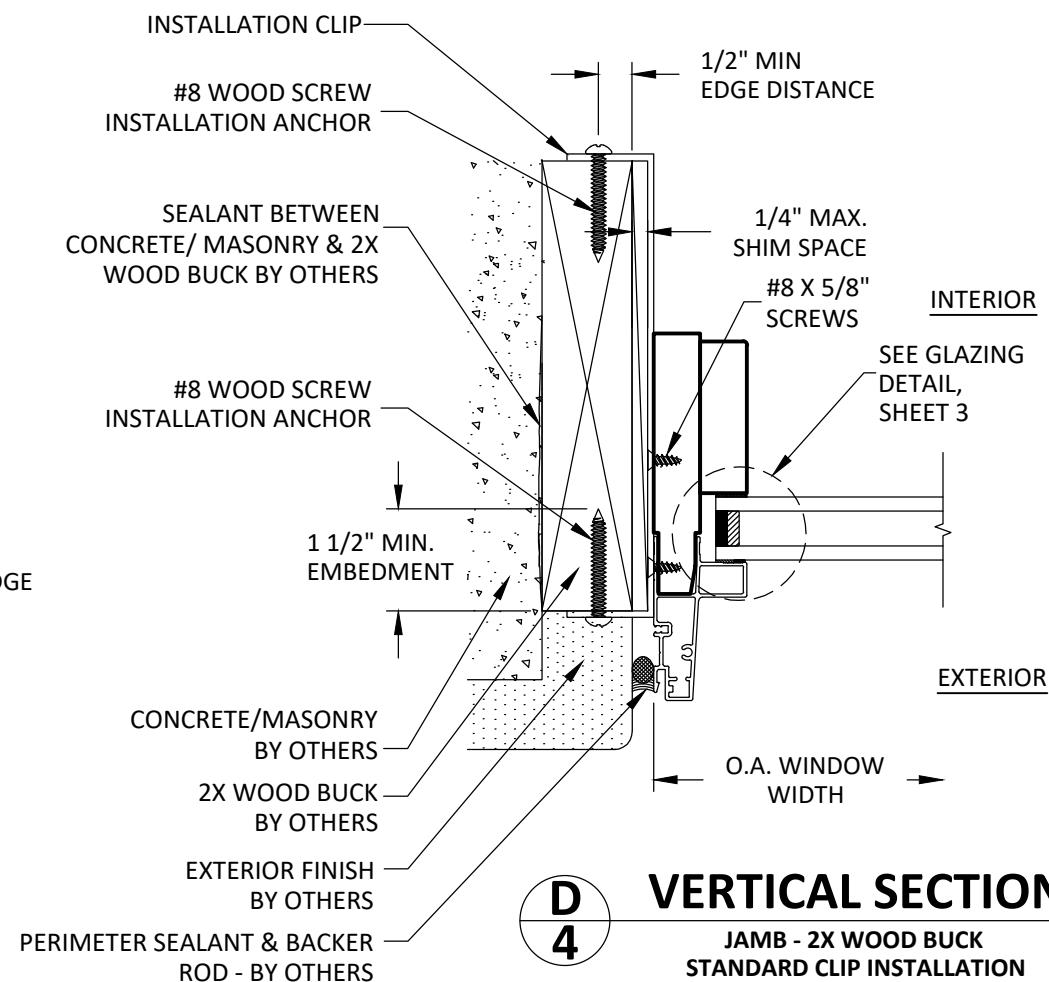
A
4 VERTICAL SECTION
HEAD - 2X WOOD BUCK
NAIL FIN INSTALLATION



B
4 HORIZONTAL SECTION
SILL - METAL STUD FRAME
NAIL FIN INSTALLATION



C
4 HORIZONTAL SECTION
JAMB - 1X BUCK (OPTIONAL) TO CONCRETE/MASONRY
THROUGH FRAME INSTALLATION



D
4 VERTICAL SECTION
JAMB - 2X WOOD BUCK
STANDARD CLIP INSTALLATION



WINDSOR WINDOWS
& DOORS

900 S. 19TH STREET.
WEST DES MOINES, IA 50265
PH: (515)223-6660 FAX: (515)224-1938

TITLE: PINNACLE CLAD DIRECT
SET WINDOW
(NON-HVHZ)(NON-IMPACT)
LOW PROFILE INSTALLATION SECTIONS

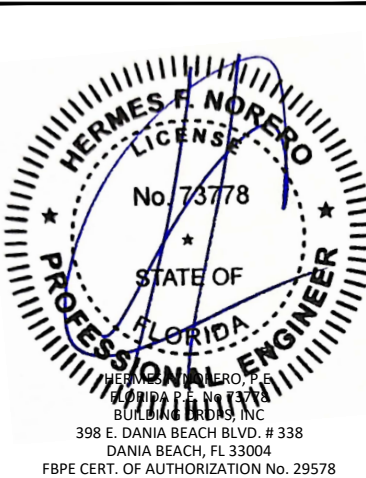
PREPARED BY: BUILDING DROPS, INC.

398 E. DANIA BEACH BLVD., STE. 338
DANIA BEACH, FL 33004
PH: (954)399-8478
FAX: (954)744-4738
WEB: www.buildingdrops.com



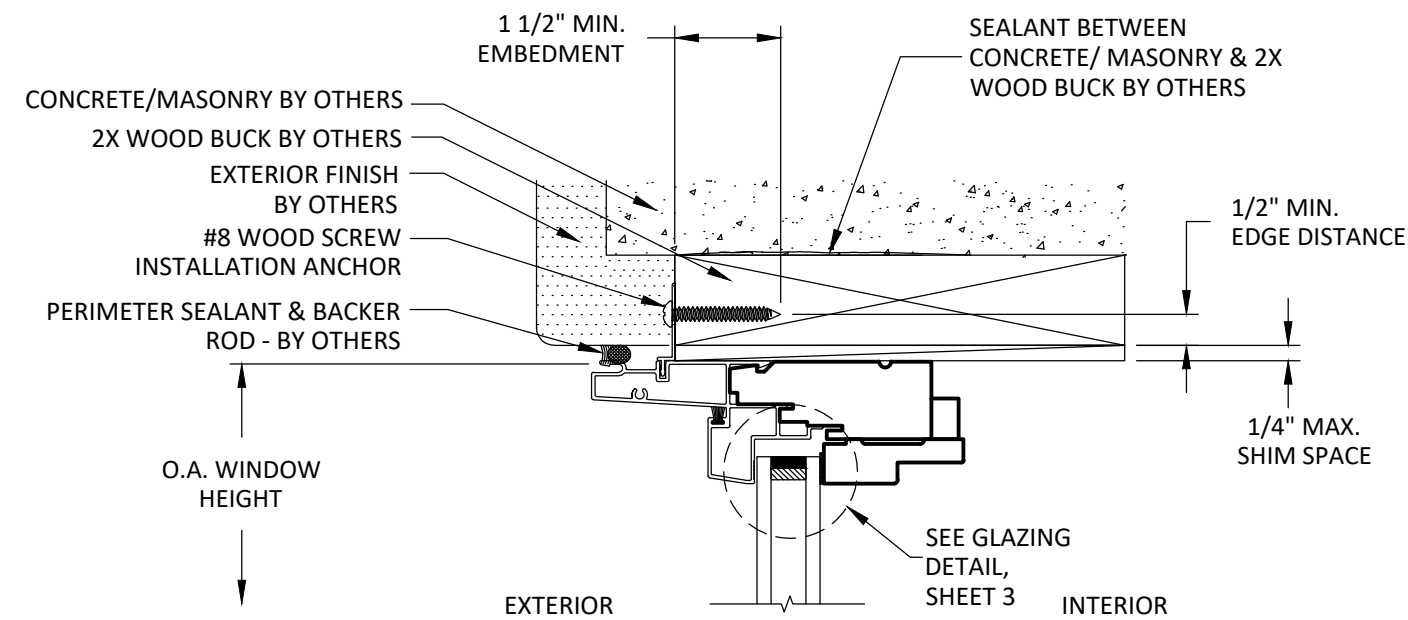
REMARKS	BY	DATE
2020 CODE CHANGE	YC	06/20
2023 CODE CHANGE	MG	02/23

THE INSTALLATION DETAILS DESCRIBED HEREIN ARE GENERIC AND MAY NOT REFLECT ACTUAL CONDITIONS FOR A SPECIFIC SITE. IF SITE CONDITIONS CAUSE INSTALLATION TO DEVIATE FROM THE REQUIREMENTS DETAILED HEREIN, A LICENSED ENGINEER OR ARCHITECT SHALL PREPARE SITE SPECIFIC DOCUMENTS FOR USE WITH THIS DOCUMENT.

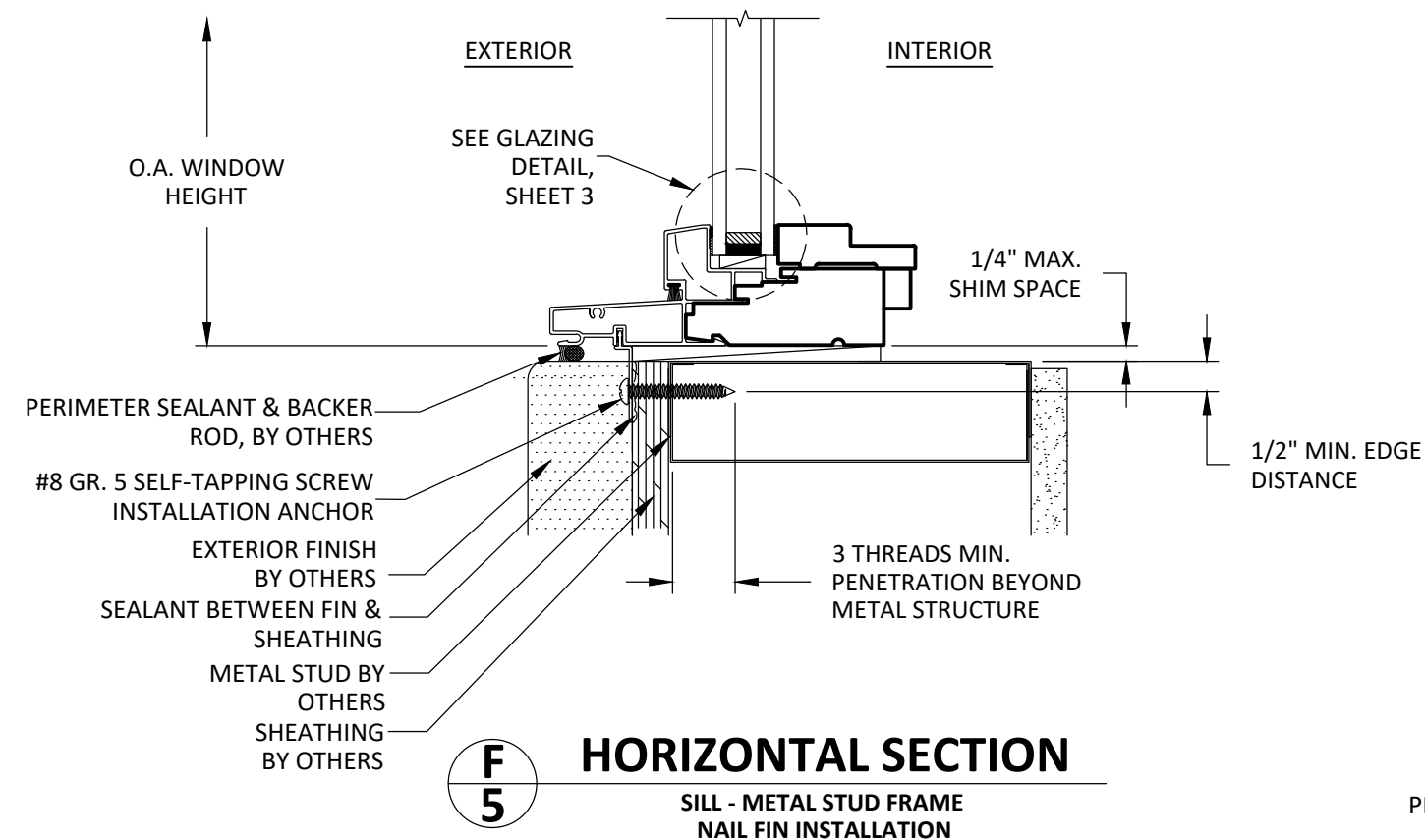


FL #:	FL11570
DATE:	06.09.2020
DWG. BY:	CHK. BY:
YC	HFN
SCALE:	NTS
DWG. #:	WWD034
SHEET:	4 OF 5

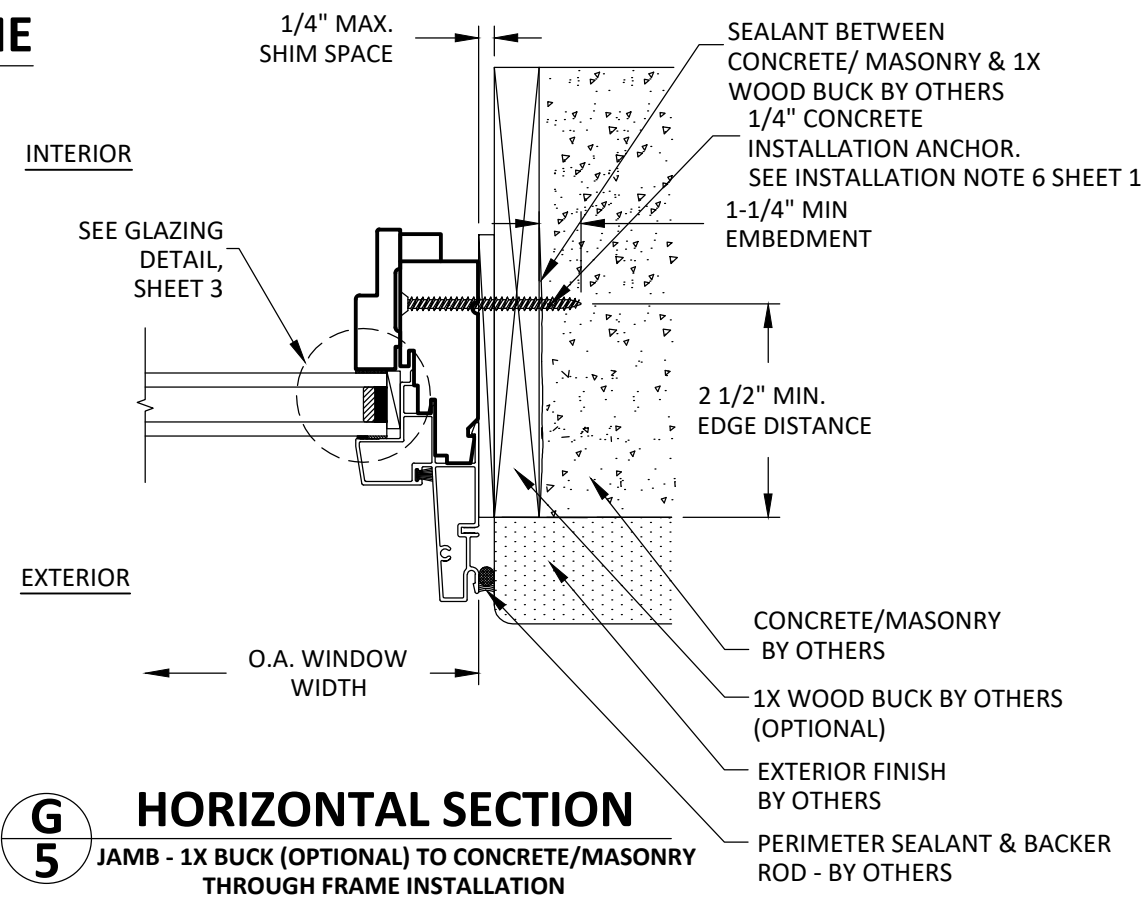
STANDARD PROFILE FRAME



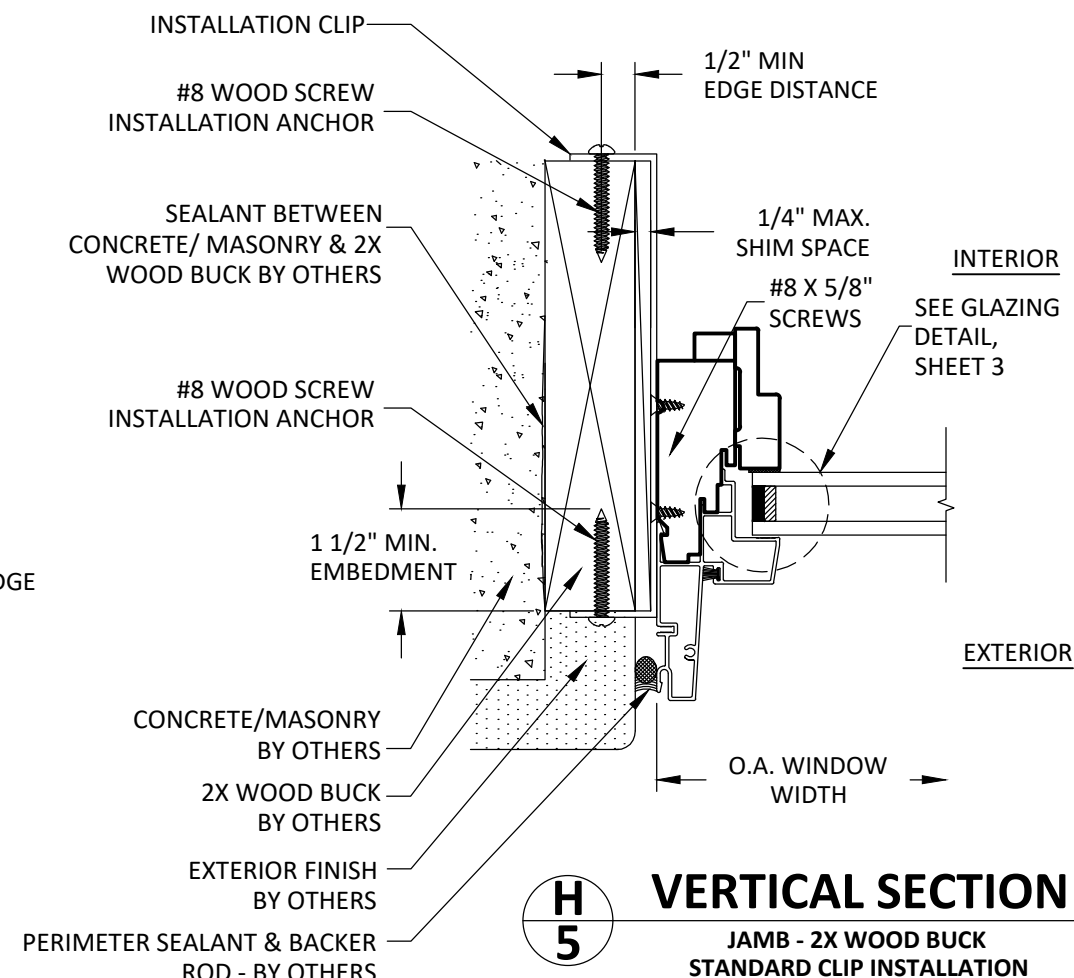
E
5 **VERTICAL SECTION**
HEAD - 2X WOOD BUCK
NAIL FIN INSTALLATION



F
5 **HORIZONTAL SECTION**
SILL - METAL STUD FRAME
NAIL FIN INSTALLATION



G
5 **HORIZONTAL SECTION**
JAMB - 1X BUCK (OPTIONAL) TO CONCRETE/MASONRY
THROUGH FRAME INSTALLATION



H
5 **VERTICAL SECTION**
JAMB - 2X WOOD BUCK
STANDARD CLIP INSTALLATION



WINDSOR WINDOWS
& DOORS

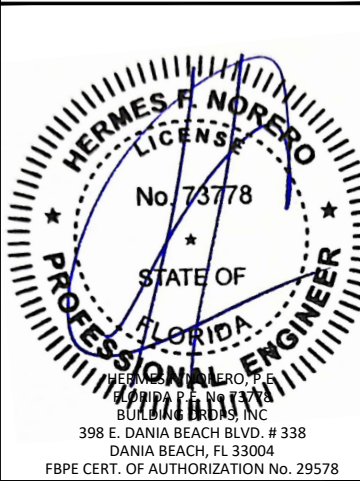
900 S. 19TH STREET.
WEST DES MOINES, IA 50265
PH: (515)223-6660 FAX: (515)224-1938

TITLE: PINNACLE CLAD DIRECT
SET WINDOW
(NON-HVHZ)(NON-IMPACT)
STANDARD PROFILE
INSTALLATION

PREPARED BY: BUILDING DROPS, INC.
398 E. DANIA BEACH BLVD., STE. 338
DANIA BEACH, FL 33004
PH: (954)399-8478
FAX: (954)744-4738
WEB: www.buildingdrops.com

REMARKS	BY	DATE
2020 CODE CHANGE	YC	06/20
2023 CODE CHANGE	MG	02/23

THE INSTALLATION DETAILS DESCRIBED HEREIN ARE GENERIC
AND MAY NOT REFLECT ACTUAL CONDITIONS FOR A SPECIFIC
SITE. IF SITE CONDITIONS CAUSE INSTALLATION TO DEVIATE
FROM THE REQUIREMENTS DETAILED HEREIN, A LICENSED
ENGINEER OR ARCHITECT SHALL PREPARE SITE SPECIFIC
DOCUMENTS FOR USE WITH THIS DOCUMENT.



FL #:	FL11570
DATE:	06.09.2020
DWG. BY:	CHK. BY:
YC	HFN
SCALE:	NTS
DWG. #:	WWD034

SHEET:
5
OF 5